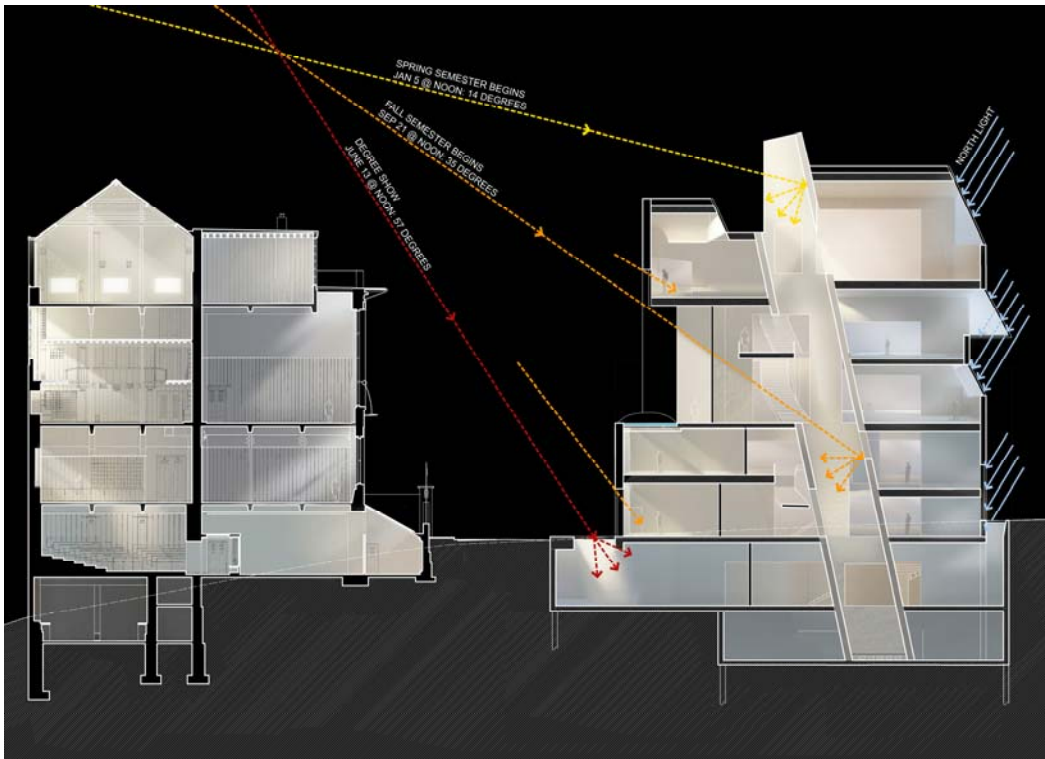


# STEVEN HOLL ARCHITECTS

NEW YORK +1 212 629 7262  
BEIJING +86 10 8440 8551  
WWW.STEVENHOLL.COM



## Steven Holl Architects Design for the Glasgow School of Art Redevelopment Unveiled

**Glasgow, 17 September 2010 - The plans for Phase 1 of The Glasgow School of Art re-development were released today. Designed by Steven Holl Architects in partnership with JM Architects (Glasgow) and Arup Engineering, the new building will replace the Foulis Building and Newbery Tower on Renfrew Street opposite the Mackintosh building and significantly refurbish the Assembly Building which houses the Students' Union.**

Steven Holl Architects was appointed last September following an international competition to design a new building for the Art School which would enhance significantly the teaching, learning and research facilities available to GSA students and staff as well as providing access to new publicly accessible spaces including exhibition galleries and the Windows on the Mack interpretation area for the Mackintosh Building.

Inspired by Mackintosh's inventive manipulation of his 1909 Art School building's plan

and section to introduce and deploy light in a tremendous variety of inspiring and successful ways, the new design complements its neighbour, but moves forward using a new language of light. With well proportioned studio and workshop spaces at the core of teaching and making art, these spaces are arranged in plan and section with natural side and top light for inspiring work environments, supplemented with 'driven voids of light' that penetrate the building's core and deliver natural light through its depth; providing direct connectivity with the outside world through the changing intensity and color of the sky.



The design provides much needed studios and centralized workshop facilities, the Center for Advanced Textiles, new digital media spaces, a lecture theatre and seminar rooms, exhibition space, a refectory for staff and students and a range of informal learning areas. The interpretation centre for the Mackintosh Building, phase 4 of the Mackintosh Conservation and Access Project is also on the site.

“Our collaboration with Steven Holl Architects and theirs with JM Architects has produced a design that I am confident will deliver a world-class building for The School and for Glasgow,” says Professor Seona Reid, Director of The Glasgow School of Art. “An intensive design development process has produced a building which not only provides all the specific functionality that we need for our educational and research purpose but also creates an environment which will inspire all who study, work and visit there. . The inventive use of light, material and section make it a worthy companion to Mackintosh, a striking building of which we will all be immensely proud.”

Steven Holl said, "The site opposite the Mackintosh Building calls for a unique, inspiring and stimulating twenty-first century architecture with a great sensitivity to light, detail, and material. The new Glasgow School of Art Building will provide contemplative space for individual creativity and thought, and spaces of collective interaction for students, staff and the Garnethill community."



The design began with the Studio space - the core of teaching and making art. Well-proportioned studio and workshop volumes are arranged in plan and section with ideal top and side light. They are adaptable with potential for individual studios to open into larger groups, and arranged with functionally adjacent support spaces in rhythm with the studio/workshop volumes. They are illuminated with north light, with shafts of warm south, east or west light. Studios are generally positioned on the north façade provided with large inclined north facing glazing to maximize access to the desirable high quality diffuse north light throughout the academic year. Spaces that do not have a requirement for the same quality of natural light, are located on the South façade (opposite the Mackintosh building) where access to sunlight can be balanced with the occupants' needs and the thermal performance of the space through application of shading or informed shaping of openings.

Centralized facilities for the GSA campus, including exhibition spaces, seminar spaces, digital media and the "Window on the Mackintosh" centre are located on the ground floor in a carefully considered balance that forges an identity as an academic building, for the school and students, but that also invites the public inside.

Located one level below, a 300-seat lecture theatre has direct access to the lobby as well as the centralized workshop and associated assembly spaces. Immediately above the ground floor are the school directorate and administrative offices (on the south) whilst studio space occupies the entire north side at this level and moving up through the building. The new GSA refectory is located on level 2 above the offices, bringing the entire school up and into the building on a daily basis.

Along the South elevation, at the same height as the Mackintosh main studios, there is a landscape loggia in the form of a Machair that gives the school an exterior social core open to the city. Natural vegetation with some stonework routes water into a small recycling water pond which will also reflect dappled sunlight onto the ceiling inside. Meanwhile inside the 'Driven Void' light shafts deliver natural light through the depth of

the building providing direct connectivity with the outside world through the changing intensity and colour of the sky.

The exterior of the building will be coated in a thin skin of matte glass referencing Mackintosh's stone skin on the 1909 building. The material, used by Steven Holl Architects on the Vanke Center in Shenzhen, China, will soften the light on the Mackintosh building ensuring the studios continue to benefit from the quality of light as envisaged by the designer.

"The site opposite Charles Rennie Mackintosh's masterpiece, the original Glasgow School of Art, is one of the most important in Europe," says David Dunbar president of the RIAS." It is thoroughly appropriate that an international master architect is working with an excellent local team to create a building which will serve as superb foil for the impressive building opposite. The new School of Art building is also something which will merit international acclaim and attention, giving Glasgow a new highly distinctive and prominent landmark."

"It was reassuring to see the care and attention that has gone into the whole project, and the sensitive response to the site, to meet the challenges of designing opposite Mackintosh's internationally acclaimed building," says Stuart Robertson, Director of the Charles Rennie Mackintosh Society and Chair of the Mackintosh Heritage Group. I cannot wait to see the new building taking shape and I am sure it will be a great asset for the School and for Glasgow, and provide a fabulous environment for the staff and students, it will definitely be a worthy companion to the Mackintosh Building and a building of which we will all be immensely proud."



\*\*\*

**Steven Holl Architects** has realized cultural, civic, academic and residential projects both in the United States and internationally. Steven Holl Architects (SHA) is a 48 person architecture and urban design office founded in 1976, and

working globally as one office from two locations; New York City and Beijing. Steven Holl leads the office with partners Chris McVoy (New York) and Li Hu (Beijing). Most recently completed is the Linked Hybrid mixed-use complex (Beijing, China), recently named 2009 Best Tall Building Overall by the Council on Tall Buildings and Urban Habitat (CTBUH); the Knut Hamsun Center (Hamarøy, Norway), the Herring Museum of Contemporary Art (Herning, Denmark); and the Horizontal Skyscraper-Vanke Center (Shenzhen, China). Currently in construction are the Nanjing Museum of Art and Architecture (Nanjing, China), Beirut Marina (Beirut, Lebanon), Cité de l'Océan et du Surf with Solange Fabião (Biarritz, France), the Daeyang House and Gallery (Seoul, Korea); and the large mixed-use complex in Chengdu, China: the Sliced Porosity Block. In 2007, Steven Holl Architects opened the highly lauded Nelson-Atkins Museum of Art (Kansas City, Missouri). Steven Holl is a tenured Professor at Columbia University's Graduate School of Architecture and Planning.

For more information on the work of Steven Holl Architects, please visit [www.stevenholl.com](http://www.stevenholl.com) or contact [press@stevenholl.com](mailto:press@stevenholl.com).

**Press Contact:**

Julia van den Hout  
Press Manager  
Steven Holl Architects  
+1 (212) 629-7262 x20  
[press@stevenholl.com](mailto:press@stevenholl.com)