

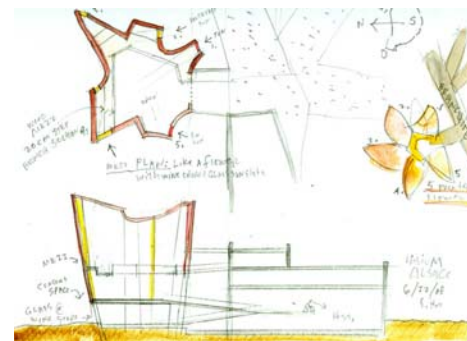
STEVEN HOLL ARCHITECTS

NEWYORK +1 212 629 7262
BEIJING +86 10 8440 8551
WWW.STEVENHOLL.COM



Steven Holl Architects To Build The Hotel Loisium Alsace In Alsace, France

New York City, January 23, 2009 — Steven Holl Architects (SHA), in collaboration with Rüssli Architects, has been commissioned to realize a new Hotel, Spa, and Wine Center for Loisium SAS in Alsace, France. Sited at the edge of a forest overlooking vineyards to the east and south, this 100-room destination hotel, spa, and wine center in Alsace has views of Switzerland and Germany in the distance. The red cliff from the former stone quarry on the site provides a unique background for the building, while an ancient road crosses the site coming from the historic Marbach Abbey, which was once part of the pilgrim path to Santiago de Compostela.



The concept of Arborescent Structures - a morphology of tree-like branching - gives a unique order and space to this building as it gently merges with the landscape's slope. The arborescent concept allows for the shaping of different exterior spaces, one for the privacy of the spa, one for the more public character of the restaurant. In the hotel, the single loaded corridors, rooms and suites offer rich views into the landscape of the surrounding forest and vineyards.

The concrete frame structure is sheathed in blackened wood siding which merges with the dark greens of the forest and landscape. The main lobby of the hotel has two fronts allowing guests to walk from trellis covered parking on the south, or to be directly dropped off on the north.



Like a flower branching from this wooden tree, the event center pavilion is covered in red weathered steel, similar to the local stone cliff, colored glass in different shades of red. This pavilion has a wine gallery at its base with a direct connection to the hotel restaurant. On the level above, connected to the lobby, is a gathering space for concerts, weddings, and special hotel events. This space has chapel-like acoustics with a reverberation time of just less than two seconds – perfect for chamber music. The flower-like pavilion can also be a place of silence and reflection, connecting to the site history with the adjacent monastery and abbey.

Steven Holl Architects has realized cultural, civic, academic and residential projects both in the United States and internationally. Steven Holl Architects (SHA) is a 65 person innovative architecture and urban design office founded in 1976, and working globally as one office from two locations; New York City and Beijing. Steven Holl leads the office with partners Chris McVoy (New York) and Li Hu (Beijing). Currently under construction is the Linked Hybrid mixed-use complex (Beijing, China) third on TIME magazine's list of upcoming Architectural

Marvels of 2007, the Nanjing Museum of Art and Architecture (Nanjing, China), the Vanke Center (Shenzhen, China), Beirut Marina (Beirut, Lebanon), the Herring Center of the Arts (Herring, Denmark), Knut Hamsun Center (Hamarøy, Norway) and Cité du Surf et de l'Océan (Biarritz, France). In 2007 Steven Holl Architects opened the highly lauded Nelson-Atkins Museum of Art (Kansas City, Missouri) and the Department of Philosophy at New York University (NYU). Recently the office has won a number of international design competitions including Sail Hybrid (Knokke-Heist, Belgium), Meander (Helsinki, Finland), and the new Arts Buildings for Princeton University (Princeton, New Jersey). Most recently Steven Holl Architects has been commissioned to realize a large mixed-use complex in Chengdu, China: the 'Sliced Porosity Block'. Steven Holl is a tenured Professor at Columbia University's Graduate School of Architecture and Planning.

For more information on the work of Steven Holl Architects, please visit www.stevenholl.com

For more information on the work of Rüssli Architekten AG, please visit <http://www.ruessli.ch>

For more information on Loisiium SAS, please visit <http://www.loisiium.at/>

Press Contact:

Kellie Honeycutt and Elizabeth Reina

Blue Medium

t + 212 675-1800

kellie@bluemedium.com

elizabeth@bluemedium.com

STEVEN HOLL ARCHITECTS

NEW YORK +1 212 629 7262
BEIJING +86 10 8440 8551
WWW.STEVENHOLL.COM

Loisium Alsace
near Colmar, , France
2008 - 2011

CREDIT SHEET

client

Loisium Alsace SAS

architect

Steven Holl Architects

Steven Holl (design architect)

Chris McVoy (project advisor)

Christiane Deptolla (project architect)

Marcus Carter, Runar Halldorsson, Fiorenza Matteoni, Clare Smith, Ebbie Wisecarver (project team)

associate architects

Rüssli Architekten AG

Justin Rüssli

Peter Steinmann

Christoph Plattner

Pascal Germann

engineer

O.T.E. Ingenierie

spa specialist

Schletterer Wellness & SPA Design GmbH

Press Contact

Kellie Honeycutt and Elizabeth Reina - Blue Medium

t + 1 212 675-1800

elizabeth@bluemedium.com

kellie@bluemedium.com