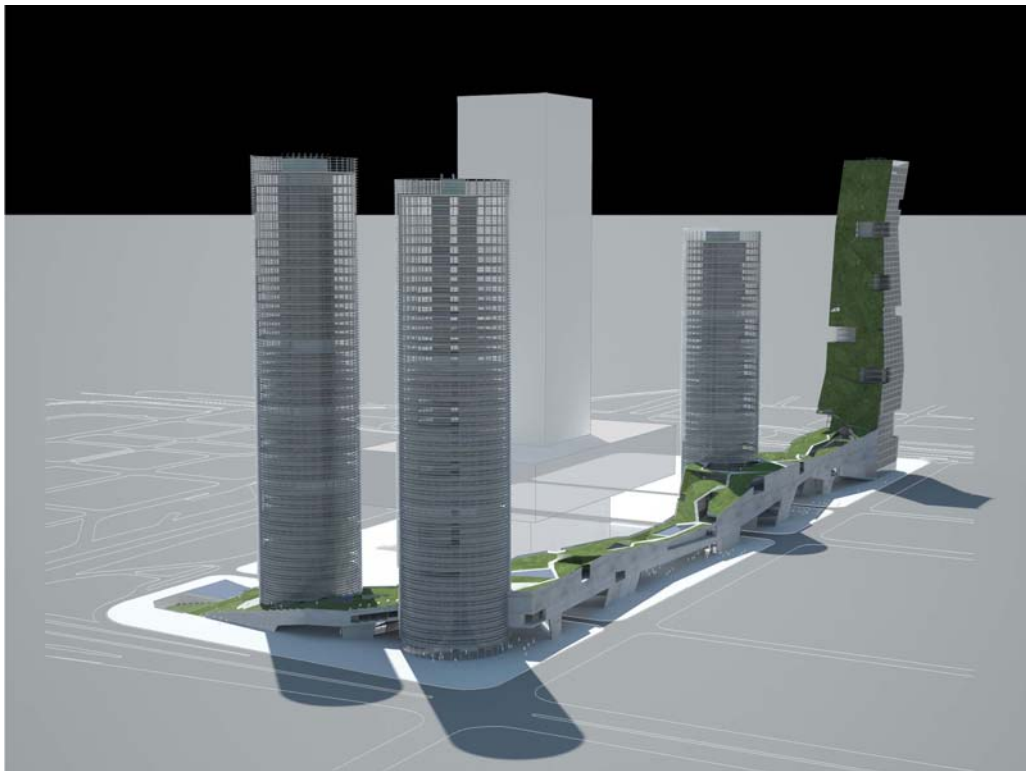


STEVEN HOLL ARCHITECTS

NEW YORK +1 212 629 7262

BEIJING +86 10 8440 8551

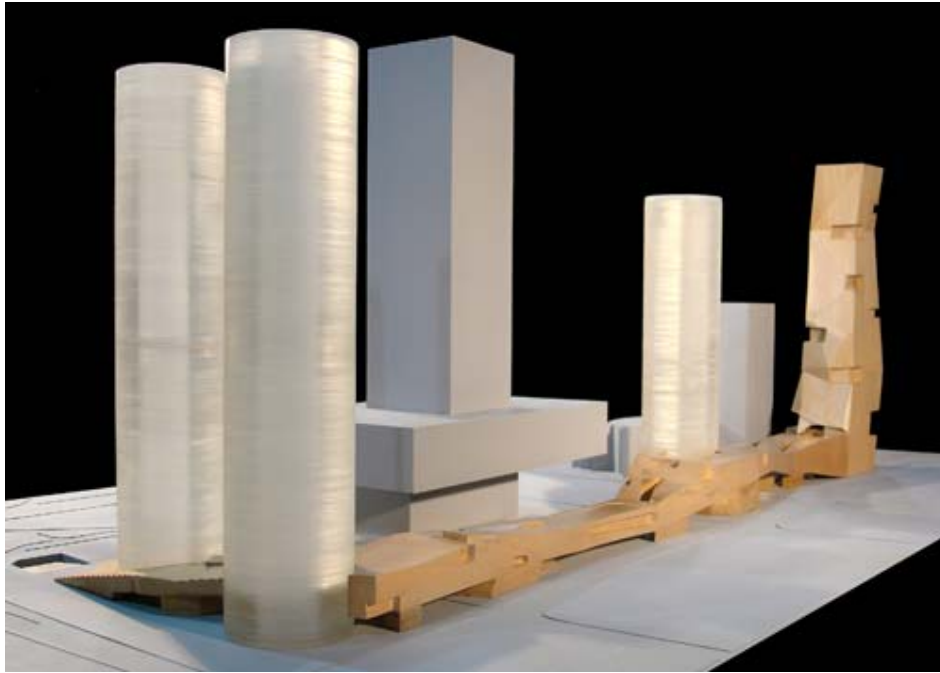
WWW.STEVENHOLL.COM



Steven Holl Architects Wins Master Plan in “Shenzhen 4 Tower in 1” Competition

New York, NY: February 10, 2009 – Steven Holl Architects have been selected as the winning firm for the design of the master plan of the “Shenzhen 4 Tower in 1” competition by unanimous decision. This competition was for an office tower complex around the new Shenzhen Stock Exchange Headquarters located in Shenzhen’s Futian commercial business district. It was organized by the Shenzhen Planning Bureau to create a unified urban plan, around the Headquarters, for the new office towers of Shenzhen Media Group, China Construction Bank, China Insurance Group, and Southern & Boseru Funds. A six-member jury chaired by Arata Isozaki selected the winners of the competition. Other participants, including Morphosis, Coop Himmelb(l)au, Atelier FCJZ, and Hans Hollein, won for their individual tower designs.

Steven Holl Architects’ design for the master plan is based on the concept of tropical skyscrapers as Shade Machines with a Social Bracket connecting the towers and the street level with a horizontal structure containing public programs and a rooftop water garden.



The Social Bracket gathers the public programs from all four towers, combining them as one continuous element that links the four sites with the city streets and pedestrian traffic. Supporting programs for the towers, such as cafeterias and gyms, are combined in the Social Bracket and enhanced with cultural programs such as art galleries, auditoriums, and a cinema. The Social Bracket's sculpted form allows it to negotiate between environmental restrictions and the requirements of the public programs. It features a continuous roof garden park that collects storm water and recycles all the greywater from the four skyscrapers. Roof garden ponds and plantings utilize the combined storm water and greywater after passage through a central ultraviolet filter system. A public route connects the subway into the Social Bracket, linking directly to all four towers. Connecting across the Stock Exchange Plaza, the new elevated bracket acts as an urban interface between the business-centric district to the south and the residential area to the north.



Steven Holl Architects' competition design for the four towers as Shade Machine utilizes circular building footprints to maximize the interior space and open views while minimizing the exterior envelope. The optimized office floors are connected via double-height and triple-height social spaces on alternating sides of the towers. Automatic solar tracking screens made of perforated PV cells make one full rotation per day around the circumference of each building, collecting enough PV energy to cool the towers completely. Always oriented towards the sun, the moving shades harvest solar energy and block solar heat gain, their louvered sections tilting to horizontal orientation at noon to gather maximum sunlight. The one-meter deep louvers block high-angle solar gain and bounce diffused natural light onto the ceilings deep into the floor plate. The screens' full rotation per day allows the towers to act as an urban clock with synchronized rotation in time even on cloudy days.



Steven Holl Architects has realized cultural, civic, academic and residential projects both in the United States and internationally. Steven Holl Architects (SHA) is a 55 person innovative architecture and urban design office founded in 1976, and working globally as one office from two locations; New York City and Beijing. Steven Holl leads the office with partners Chris McVoy (New York) and Li Hu (Beijing). Currently under construction is the Linked Hybrid mixed-use complex (Beijing, China), third on TIME magazine's list of Architectural Marvels of 2007, the Nanjing Museum of Art and Architecture (Nanjing, China), the Vanke Center (Shenzhen, China), Beirut Marina (Beirut, Lebanon), the Herning Center of the Arts (Herning, Denmark), Knut Hamsun Center (Hamarøy, Norway), Cité de l'Océan et du Surf (Biarritz, France), and the large mixed-use complex in Chengdu, China: the 'Sliced Porosity Block'. In 2007 Steven Holl Architects opened the highly lauded Nelson-Atkins Museum of Art (Kansas City, Missouri) and the Department of Philosophy at New York University (NYU). Recently the office has won a number of international design competitions including Sail Hybrid (Knokke-Heist, Belgium), Meander (Helsinki, Finland), the LM Harbor Gateway (Copenhagen, Denmark) and the new Center for Creative and Performing Arts for Princeton University (Princeton, New Jersey). Steven Holl is a tenured Professor at Columbia University's Graduate School of Architecture and Planning.

For more information on the work of Steven Holl Architects, please visit www.stevenholl.com

Press Contact:

Kellie Honeycutt and Elizabeth Reina - Blue Medium

t + 212 675-1800

kellie@bluemedium.com

elizabeth@bluemedium.com